

Short Title

METRO ARTERIAL CONNECTOR - SR 92 REALIGNMENT
PHASE II FROM COOPER STREET RELOCATION TO PINE
DRIVE

GDOT Project No.

0006901

Federal ID No.

CSSTP-0006-00(901)

Status

Programmed

Service Type

Roadway / General Purpose Capacity

Sponsor

GDOT

Jurisdiction

Regional - West

Analysis Level

In the Region's Air Quality Conformity Analysis

Existing Thru Lane

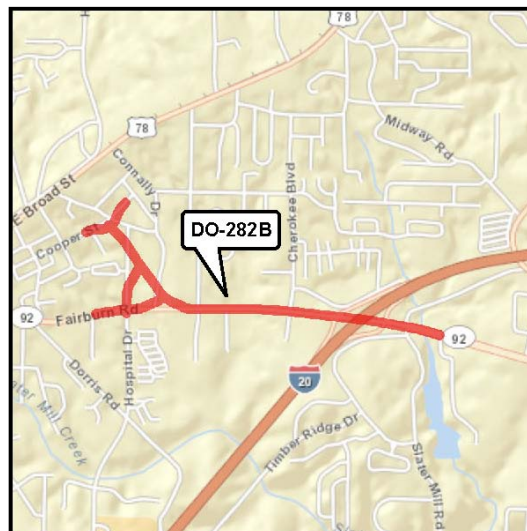
0/4

Planned Thru Lane

6

Detailed Description and Justification

In conjunction with other DO-282 line items, this project creates a continuous six-lane realignment of SR 92 around central Douglasville from Cooper Street to Pine Drive.



Copyright 2005 Aero Surveys of Georgia, Inc. Reproduced by permission of the copyright owner. Contact <http://www.aerotlas.com>

Network Year

2020

Corridor Length

1.4 miles

Phase Status & Funding Information		Status	FISCAL YEAR	TOTAL PHASE COST	BREAKDOWN OF TOTAL PHASE COST BY FUNDING SOURCE			
					FEDERAL	STATE	BONDS	LOCAL/PRIVATE
PE	Local Jurisdiction/Municipality Funds	AUTH	2005	\$1,785,000	\$0,000	\$0,000	\$0,000	\$1,785,000
PE	Federal Earmark	AUTH	2010	\$450,000	\$360,000	\$90,000	\$0,000	\$0,000
PE	SAFETEA-LU Earmark	AUTH	2011	\$650,000	\$520,000	\$130,000	\$0,000	\$0,000
PE	STP - Statewide Flexible (GDOT)	AUTH	2012	\$1,400,000	\$1,120,000	\$280,000	\$0,000	\$0,000
ROW	SAFETEA-LU Earmark	AUTH	2011	\$6,330,444	\$4,664,355	\$1,666,089	\$0,000	\$0,000
ROW	STP - Urban (>200K) (ARC)	AUTH	2011	\$17,830,800	\$12,279,840	\$3,060,960	\$0,000	\$2,481,000
UTL	STP - Statewide Flexible (GDOT)		2016	\$377,000	\$301,600	\$75,400	\$0,000	\$0,000
CST	STP - Statewide Flexible (GDOT)		2016	\$10,690,765	\$8,552,612	\$2,138,153	\$0,000	\$0,000
				\$39,514,009	\$27,798,407	\$7,449,602	\$0,000	\$4,266,000

SCP: Scoping PE: Preliminary engineering / engineering / design / planning PE-OV: GDOT oversight services for engineering ROW: Right-of-way Acquisition
UTL: Utility relocation CST: Construction / Implementation ALL: Total estimated cost, inclusive of all phases



For additional information about this project, please call (404) 463-3100 or email transportation@atlantaregional.com.

